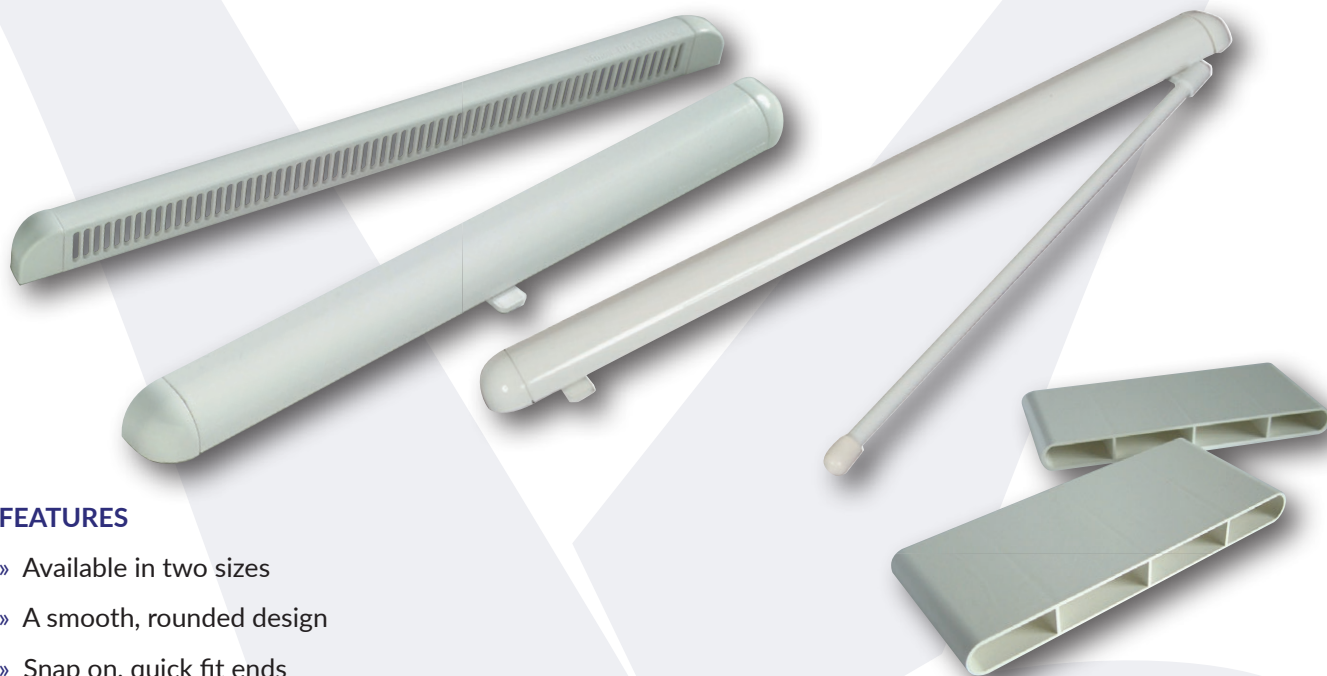


Simon Framevent

Manufactured in the highest quality U.V stabilised PVCu, the Simon Framevent has been specifically designed for the volume market. Durable, easy to fit and fully tested, it is ideal for both timber and PVCu frames and its slim, elegant design makes it a popular choice.



FEATURES

- » Available in two sizes
- » A smooth, rounded design
- » Snap on, quick fit ends
- » Positive open and close action
- » Integral flyscreen in external hood

OPTIONS

- » Rod control available- for full compliance with Approved Document K 2013
- » Can be fitted to give updraught or down-draught
- » Sleeves available - for full compliance with BS7412: 2007 & BS EN 14351-1:2006
- » Joiner pieces available

Tested in accordance with BS EN 1026:2016 & BS EN 1027: 2016 Weather performance

AVAILABLE IN:

Standard white (RAL 9910)	Bright white (RAL 9016)	Cream (RAL 1015)
Tan (RAL 8003)	Mahogany Rosewood (RAL 8017)	Black (RAL 9005)
Grey (RAL 7016)	Irish Oak (RAL 1011)	Chartwell Green (BS 14 C 35)
Silver Grey (RAL 7001)	Slate Grey (RAL 7015)	Agate Grey (RAL 7038)
Black Brown (RAL 8022)	Ice Cream White (RAL 9001)	

R.W. Simon Limited

System Works, Hatchmoor Industrial Estate, Torrington, Devon EX38 7HP United Kingdom
Tel: 01805 623721 Fax: 01805 624578 Email: info@rwsimon.co.uk Web: www.rwsimon.co.uk



Simon Framevent

Model Details	
Framevent 300	Length – 300mm Equivalent area as per BS 13141-1:2019 – 2328mm ² Box qty – 50 Slot Size – 260x13mm
Framevent 400	Length – 400mm Equivalent area as per BS 13141-1:2019 – 3180mm ² Box qty – 50 Slot Size – 365x13mm

FIXING INSTRUCTIONS

- » Route out the Frame with the correct slot size & configuration for the model to be fitted
- » Place unit centrally over the slots
- » Fix unit in place by using screws provided
- » Screw hole centres are 10mm in from each end (20mm off the overall length)

PERFORMANCE

- » Independently tested to BS EN 13141-1:2019
- » Water tightness of 400pa
- » Independently acoustically tested in accordance with BS EN 20140-10:1992, ISO 140-10:1991

MAINTENANCE

- » The Framevent can be cleaned using a damp cloth. The external hood should be brushed lightly to remove dust from the flyscreen area

**Airflow rates quoted are for when fitted in accordance with manufacturer's instructions.
We recommend silicone sealing vents for best results**

